

WELCOME IN SOUSSE-TUNISIA

Perched on the coast of the Mediterranean Sea, Sousse is a glistening town on the East Cost of Tunisia, located about 150 km south of the capital.



Sousse was founded by the Phoenicians in 11th century and has been fought by the Romans, Arabs and Europeans. This vibrant colorful history and his vibrant culture make Sousse a must visit destination for everyone- whether you want to laze about on the beach or immerse yourself in history.



Location

Hôtel Mouradi – Sousse, Tunisia.

Access

20 km drive from the Monastir airport.

Contact

Dr. Noamen Guermazi

noamen.guermazi@gmail.com

+0021699614199

Second International Conference Materials, Environment and Durability 2015



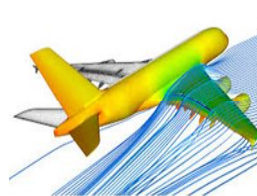
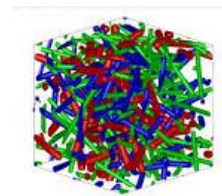
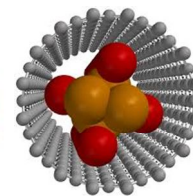
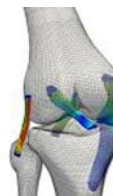
October, 29-31th

CALL FOR PAPERS

Organized by:

Materials Engineering and Environment Laboratory
(LGME, ENIS– TUNISIA)

Tribology and dynamics of systems Laboratory
(LTDS, ECL– FRANCE)



Submission deadline of
summaries

30/06/2015

Acceptance notification

15/ 07/2015

Submission deadline of full
papers

30/09/2015

Scopes

The second International conference on Materials, Durability and Environment (MED'2015), will be organized by Materials Engineering and Environment Laboratory (LGME) and will be held on October, 29-31th in Tunisia. The MED'2015 aims at attracting the interest of specialist and researchers from the international community working in research areas related to Materials Engineering and Sciences. MED'2015 allow the scientific community around the world to discuss their researches and ideas and experiences.

Conference Topics

The conference will cover numerous disciplines related to the following fields:

- materials: elaboration and characterization;
- mechanics: materials forming and numerical simulation;
- durability of materials: corrosion and aging.

Registration Fees

- **Student** 500 Euros
- **Academic** 700 Euros
- **Industrial** 1000 Euros

Registration fees include inscription kit, five coffee break and hotel (three night full board).

Online Papers Submission

Submission must be written in English. They will be subjected to peer review. Authors are requested to submit their papers on PDF format following the guidelines given in the conference website: <http://med2015.ec-lyon.fr>

Social Program

An attractive social program including conference dinner and cultural events are planned. Post conference tour to Eljem amphitheater and sea trip will be organized under request. For additional information, please check the conference website.

Conference Chair

Pr. Khaled Elleuch (ENIS, Tunisia)

Organization Committee

Z. ANTAR	ENIS, Tunisia	N. HADDAR	ENIS, Tunisia
N. GUERMAZI	ENIS, Tunisia	R. TAKTAK	ENIS, Tunisia
A. KTARI	ENISO, Tunisia		

Scientific Committee

M. ÜRGEN	ITU, Turkey	F. SCHMIDT	Mines d'Albi, France
J.F. FELLER	UBS, France	F. HILD	ENS CACHAN, France
M. GASPERINI	Paris 13, France	P. PONTTHIAUX	ECParis, France
P.Y. MANACH	UBS, France	M. JEANDIN	Mines ParisTech, France
J.P. CELIS	KU Leuven, Belgium	A. KOUBAA	UQT, Canada
Z. AYADI	EEIGM, France	J. BOUAZIZ	ENIS, Tunisia
L. MAJIDI	FSE, Maroc	N. BENSEDDIQ	Univ-Lille, France
F. ZAÏRI	Polytech Lille, France	Ph. KAPSA	ECLyon, France
M. FEKI	ENIS, Tunisia	K. SAI	ENIS, Tunisia
L. DIENG	IFSTAR Nantes, France	S. Kamoun	ENIS, Tunisia

Sponsors List